

# Year 4: Water Pollution

## Geography

### What do we already know?

**In Year 3,** We developed our map reading skills and we used the 8 points of the compass.

**In Year 2,** we have studied the physical and human geography of a small area of the United Kingdom. We have located and named the capital cities of the 4 countries of the UK.

### Geographical Skills and Fieldwork

Know how to use maps (key, symbols etc), Name and locate the Equator, Northern Hemisphere, Southern Hemisphere, the Tropics of Cancer and Capricorn, Arctic and Antarctic Circle and date time zones

Know and describe key aspects of: physical geography, including: rivers, mountains, volcanoes and earthquakes and the water cycle.

Know the meaning of erosion and deposition.

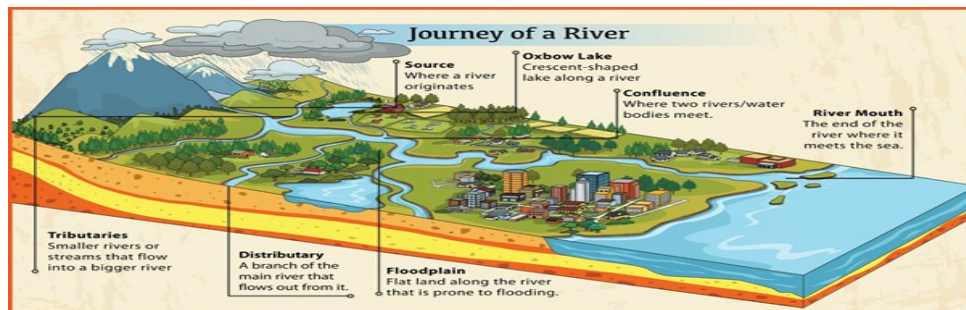
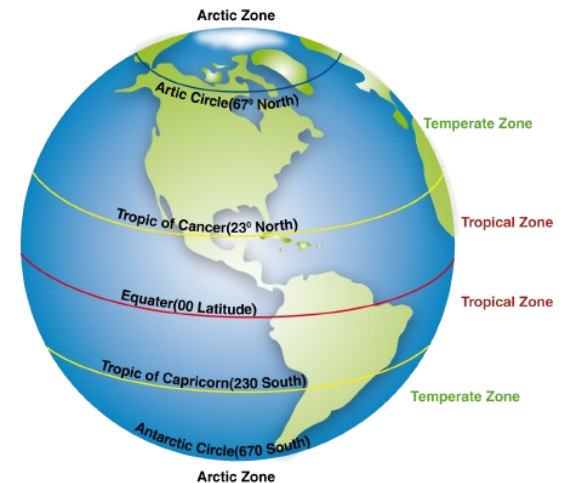
Identify patterns in the relationship between the stages of a river and the amount of erosion and deposition

Demonstrate how waves erode coasts.

Compare and contrast the physical process of the water cycle with any other two physical geographical pro-

### Direction and Location Vocabulary

Key Word	Definition
hemisphere	A half of the earth, usually as divided into northern and southern <a href="#">halves</a> by the <a href="#">equator</a> .
tropics	The parallel of latitude 23°26' north (tropic of Cancer) or south (tropic of Capricorn) of
erosion	The process of <a href="#">eroding</a> or being <a href="#">eroded</a> by wind, water, or other natural agents.
deposition	Deposition is the laying down of sediment carried by wind, flowing water, the sea or ice. Sediment can
Physical process	A continuous action or series of changes which alters the material form of matter .
Compare	Estimate, measure, or note the <a href="#">similarity</a> or <a href="#">dissimilarity</a> between.
contrast	The state of being <a href="#">strikingly</a> different from something else in <a href="#">juxtaposition</a> or close association



### I will know at the end of the project...

1. What are the causes of water pollution.
2. The journey of a river from source to sea.
3. The water cycle.
4. How to prevent water pollution.

# Year 4 : Water Pollution

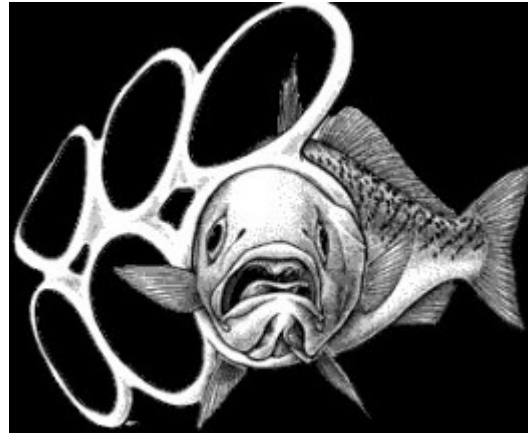
Geography

## Key facts

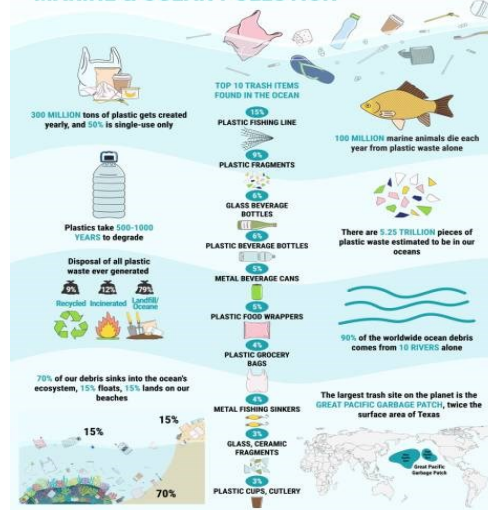
40% of America's rivers are too polluted for fishing, swimming, or aquatic life.

Sewage is discharged into rivers across the and Ireland on a daily basis.

This widespread problem of water pollution is jeopardizing our health. Unsafe water [kills more people](#) each year than war and all other forms of violence combined.



## MARINE & OCEAN POLLUTION



## Facts

Water pollution is the contamination of water; e.g. lakes, rivers, oceans and groundwater.

Water pollution occurs when pollutants are discharged into bodies of water.

Pollutants can include; sewage, oil, radioactive waste, global warming.

Water pollution affects plants, and organisms living in bodies of water.

Water pollution happens all over the world.



## Links to

All rivers originate in the mountains and travel to the sea.

Water Cycle

Recycling